

REVISION

KEY

- M = Main String
- X = Cross String
- H = Head (top)
- T = Throat
- L = Left Side
- R = Right Side
- SS= Short Side
- 2PR = 2 Piece stringing required
- 2PO = 2 piece stringing option

Length : TBD (2PO)

Tension : 29 - 35 lbs

RX60 16M 19X (2 piece)

Left Side (Short Side):

1. 1L to left power ring
2. Left power ring to 13L
3. 9L to left power ring
4. Left power ring to 1L
5. 2L to left power ring
6. Left power ring to 6L
7. 4L to left power ring
8. Left power ring to 2L and tie off at 4L

Right Side:

1. 1R to right power ring
2. Right power ring to 13R
3. 9R to right power ring
4. Right power ring to 1R
5. 2R to right power ring
6. Right power ring to 6R
7. 4R to right power ring
8. Right power ring to 2R and tie off at 4R

Tie Off : M's at 4H

X's at 6H (right) and 2T (left)

Notes:

Ektelon requires X's to be installed top to bottom on all racquets. Beware bottom to top installation of X's will void the warranty. In order to make it easier to feed cross strings through channels previously covered by main strings, it is recommended to place a piece of scrap string across the string groove prior to pulling tension on the main string. This string can then be used to pull the main string to the side when installing the cross string, and then removed from the racquet.

CAUTION:

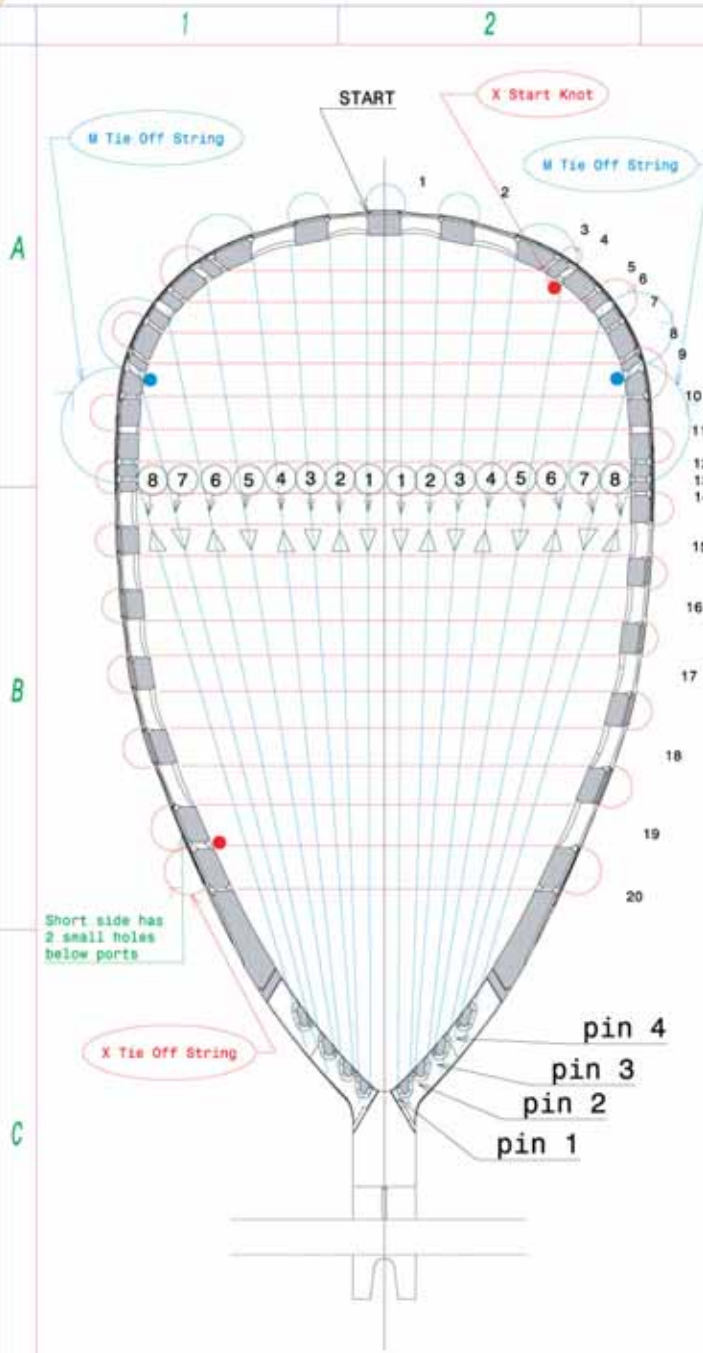
MORE PERFORMANCE racquet design is unique because they do not need plastics grommets to protect the strings. It is not recommended to use sharp object such as awls during stringing because of the potential to scratch or damage the racquet frame

This document and the contained information are confidential and exclusive property of Ektelon Division of PRINCE SPORTS INC. Neither this document nor any of the information contained in it may be used for any purpose, nor reproduced or disclosed to others, except with the express prior written consent of the Ektelon Division of PRINCE SPORTS INC.



**O3 Copper (RX60B)
2 rings option (2 piece)
STRINGING INSTRUCTION**

Please go to www.ektelon.com or www.ektelon.com/customizeit for additional string pattern options and information.



Short side has 2 small holes below ports

X Tie Off String

This document and the contained information are confidential and exclusive property of Ektelon Division of PRINCE SPORTS INC. Neither this document nor any of the information contained in it may be used for any purpose, nor reproduced or disclosed to others, except with the express prior written consent of the Ektelon Division of PRINCE SPORTS INC.

REVISION

KEY
 M = Main String
 X = Cross String
 H = Head (top)
 T = Throat
 L = Left Side
 R = Right Side
 SS= Short Side
 2PR = 2 Piece stringing required
 2PO = 2 piece stringing option

Length : TBD (2PR)
 Tension : 29 - 35 lbs

RX60B 16M 19X

- Left Side (Short Side):**
1. 1L to left pin 1
 2. Left pin 1 ring to 1L
 3. 2L to left pin 2
 4. Left pin 2 ring to 2L
 5. 4L to left pin 3
 6. Left pin 3 to 6L
 7. 9L to left pin 4
 8. Left pin 4 to 13L and tie off at 9L
- Right Side:**
1. 1R to right pin 1
 2. Right pin 1 ring to 1R
 3. 2R to right pin 2
 4. Right pin 2 ring to 2R
 5. 4R to right pin 3
 6. Right pin 3 to 6R
 7. 9R to right pin 4
 8. Right pin 4 to 13R and tie off at 9R

Tie Off : M's at 9H
 X's at 4H (right) and 2T (left)

Notes:
 Ektelon requires X's to be installed top to bottom on all racquets. Beware bottom to top installation of X's will void the warranty.
 In order to make it easier to feed cross strings through channels previously covered by main strings, it is recommended to place a piece of scrap string across the string groove prior to pulling tension on the main string. This string can then be used to pull the main string to the side when installing the cross string, and then removed from the racquet.

CAUTION:

MORE PERFORMANCE racquet design is unique because they do not need plastics grommets to protect the strings. It is not recommended to use sharp object such as awls during stringing because of the potential to scratch or damage the racquet frame



Description

03 Copper (RX60B)
8 rings option (2 piece)
STRINGING INSTRUCTION

Please go to www.ektelon.com or www.ektelon.com/customizeit for additional string pattern options and information.